

- 1** prefabricated pannels
- 2** columns
- 3** shelf for the beam
- 4** TLP beam
- 5** TT slab

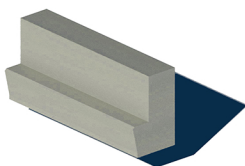
TLP BEAMS

"TLP" beams are prefabricated prestressed elements that are made with reinforced concrete RCK brand-55N / mm² and steel B450C N / mm² and cable for prestressing with fptk 1860 N / mm².

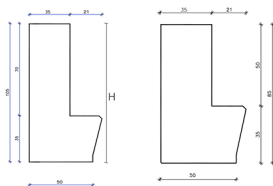
This beams are used in roof and in floor coverages accompanied by threaded bars that arise from columns to make the connection.

Use: Used in the floors and in the "flat" cover of one or more storey buildings to civil or industrial buildings. These L-shaped beam are used on the sides of the structure as support for "TT".

Length – from 6 to 13 m
 Height – min 72cm, max 110cm.
 Width – 50/65 cm



TL BEAMS - TECHNICAL VARIATIONS



"TR" 85 combined with TT50

"TR" VARIATIONS DEPENDING ON HEIGHT OF "TT"

	TT	Trarci TT
H(60)	37	72
H(60)	40	75
H(60)	50	85
H(60)	60	95
H(60)	70	105